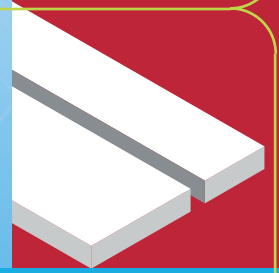




Model WC-6001



PROFESSIONAL SERIES



FOAMBOARD
STRAIGHT CUTTER

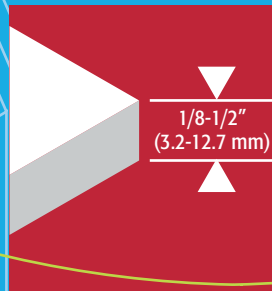


*CUTTER DROIT POUR
PLAQUES DE MOUSSE*



CORTADORA DE BORDES
RECTOS PARA UNICEL
ESPUMADO

FOR USE ON STANDARD FOAMBOARD ONLY
MUST USE FOAMBOARD UNDERLAYMENT WHILE CUTTING



Contains Foamboard Straight Cutter
and 5 blades



*Contenu Cutter droit pour plaques
de mousse et 5 lames*



Cortadora de bordes rectos
para unicel espumado
y 5 navajas

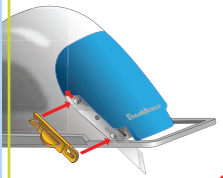
PROFESSIONAL SERIES

www.logangraphic.com

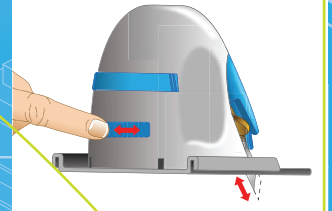
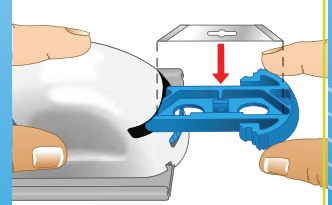
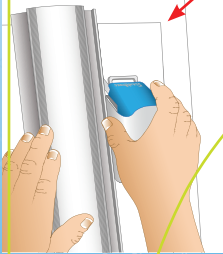
FOAMWERKS™
Model WC-6001

C Use blade:
Utiliser lame:
Utilizar navajas:
WC-5, WC-20

-  **FOAMBOARD STRAIGHT CUTTER**
-  **CUTTER DROIT POUR PLAQUES DE MOUSSE**
-  **CORTADORA DE BORDES RECTOS PARA UNICEL ESPUMADO**



NOTE: Use only scrap foam-board underneath the piece being cut.



Use with FoamWerks Channel Rail
Model #W-3001.

À utiliser avec FoamWerks Channel Rail
#W-3001.

Usar con FoamWerks Sobre Riel
Modelo #W-3001.



Recyclable

LOGAN®
GRAPHIC PRODUCTS, INC.
Tools for Art - Tools for Life



0 08957 91163 9

Logan Graphic Products, Inc.
1100 Brown Street, Wauconda, IL 60084, USA
1 847 526 5515 • Toll Free 1 800 331 6232
J1564N REV 2 5-15

Made in USA of domestic and
foreign components